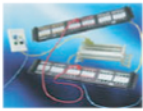


Connectivity



- ▶ **Complete Cabling Connectivity Solutions**
 - o Copper (Category 5E, 6 & 6A)
 - o Fiber Optic

- ▶ **Faceplates & Patch Panels**
- ▶ **Fiber Cabinets/Boxes**
- ▶ **110/66 Block Systems**
- ▶ **Complete A/V Solutions**

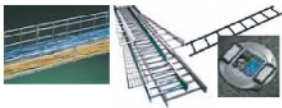
Cable Assemblies



- ▶ **Patch Cords**
 - o Copper Ethernet
 - o Fiber Optic
 - o Audio Visual
 - o Custom/Made-To-Order

- ▶ **MPO Fiber Assemblies**
- ▶ **Pre-Terminated Copper & Fiber Trunk Assemblies**

Delivery Systems



- ▶ **Cable Tray**
 - o FLEXTRAY Mesh Cable Tray
 - o Aluminum Ladder Type Tray
 - o Steel Ladder Type

- ▶ **Datacom Ladder Rack & Fittings**
- ▶ **Cent-R-Rail Center Spine Tray**
- ▶ **Poke-Throughs/Floor Boxes**

Power



- ▶ **Power Distribution Units (PDU)**
- ▶ **Intelligent PDU's**
- ▶ **Lightning Protection**
- ▶ **PoE Systems**

Audio Visual



- ▶ **Complete A/V Cabling Infrastructure**
 - o HDMI Systems
 - o X-END VGA Pre-Term Assemblies
- ▶ **XLR, RCA, SPEAKON & Mini-XLR**

- ▶ **Punch-Down, Compression & Screw Terminal Connectors**
- ▶ **Pre-Terminated & Custom Solutions**

Cable



- ▶ **Bulk Cable**
 - o Coaxial (CATV/MATV & CCTV)
 - o Ethernet (Cat3, 5, 5E, 6 & 6A)
 - o Broadcast (Audio & Video)

- ▶ **Outdoor Rated Cable**
- ▶ **Fire Alarm Cable**
- ▶ **Access Control Cable**
- ▶ **Process Control Cable**

Test & Installation



- ▶ **SecuriTest CCTV Tester**
- ▶ **LANTEK Network Certifiers**
- ▶ **SIGNALTEK Cable Performance Testers**
- ▶ **Compression Connectors (BNC, F & RCA)**

- ▶ **J-Hooks & FLEXTRAY**
- ▶ **Cable Assemblies**
 - o VGA & HDMI
 - o Patch Cords

Racks & Cabinets



- ▶ **2 & 4 Post Relay Racks**
- ▶ **A/V & Security Cabinets**
- ▶ **Cable Management**
- ▶ **Keyboard Trays**

- ▶ **Equipment Shelves**
- ▶ **Cooling Products**
- ▶ **Blanking Panels**
- ▶ **Wall Mount Cabinets**

Raceway/Inner-Duct



- ▶ **Corrugated/Smooth Wall Inner-Duct**
- ▶ **Metallic Surface Mount Raceway & Fittings**
- ▶ **Non-Metallic Surface Mount**

- ▶ **Tele-Power Poles**